



## Software Update to Ver.1.07 for Palette PTS for English/French/Spanish version

---

If you use **Palette PTS 1.0**, an update program is now available for download to improve its performance.

---

### <<Update to Version 1.07>> (October, 2005)

1. 160x260mm (Monochrome LCD), 160x260mm (Color LCD) {6 1/4"x10 1/4" (Monochrome LCD), 6 1/4"x10 1/4" (Color LCD)} are newly added in Design Page Property.  
You can choose the proper hoop size for your machine.
2. The embroidery data of .PES file created in Palette Version 5 or Version 6 can be written to Original card.
3. The embroidery data of more than 50K stitch count will be properly displayed.

### <<HISTORY>>

#### <<Driver Update>> (July, 2003)

1. The device driver for USB Reader/Writer Box has been updated to improve its performance.
2. The installation program of palette PTS corresponds with this new device driver for USB Reader/Writer Box.

---

### **\*\*NOTE\*\***

- Before applying this "Update program", please uninstall the palette PTS which is currently installed on your PC.
- This "Update program" will install all program files required for palette PTS.

---

### How to download the update program to your hard drive

1. Create a temporary folder (ex. C:\Temp) on your PC to save the update program file to be downloaded.
2. Click the "DOWNLOAD FILE" link below.
3. Select the previously created temporary folder (ex. C:\Temp) where the downloaded file should be stored.
4. Download the file. [DOWNLOAD FILE \(3.55MB\)](#)



## How to update your palette PTS

1. Uninstall the palette PTS currently installed on your PC.
2. Disconnect the USB Card Reader/Writer Box from your PC.
3. Double-click on the downloaded "ptsUpTo107.exe." file from Explore, or go to Start menu on Task bar, select Run and input "ptsUpTo107.exe." file name, click OK. The update process will automatically start.
4. Follow the instructions and proceed through the update process.
5. After the installation process finishes, re-connect the USB Card Reader/Writer Box to your PC.

If the latest device driver for USB Reader/Writer Box is installed on your PC, palette PTS will be updated to Version 1.07 and ready to use.

If the Hardware Wizard is launched automatically, please install the new device driver as follows.

### For Windows 98, Windows Me, Windows 2000 users

- Please go to 6

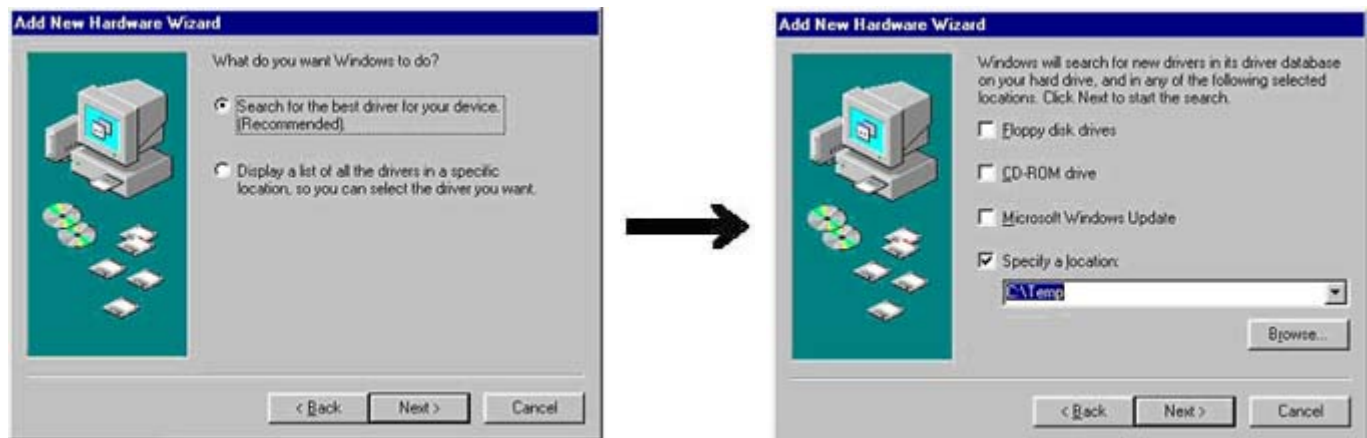
### For Windows XP users

- Please go to 7

### 6. [For Windows 98, Windows Me, Windows 2000 users only]

- The Hardware Wizard will be launched automatically.  
To install the new device driver for the USB Reader/Writer Box, please specify the previously created temporary folder (ex. C:\Temp) where the downloaded file should be stored.

### <Windows 98>





### <Windows Me>



### <Windows 2000>



- Once the Hardware Wizard finishes, palette PTS will be updated to Version 1.07 and ready to use.



7. [For Windows XP users only]

- (If Your PC is connected to Internet)

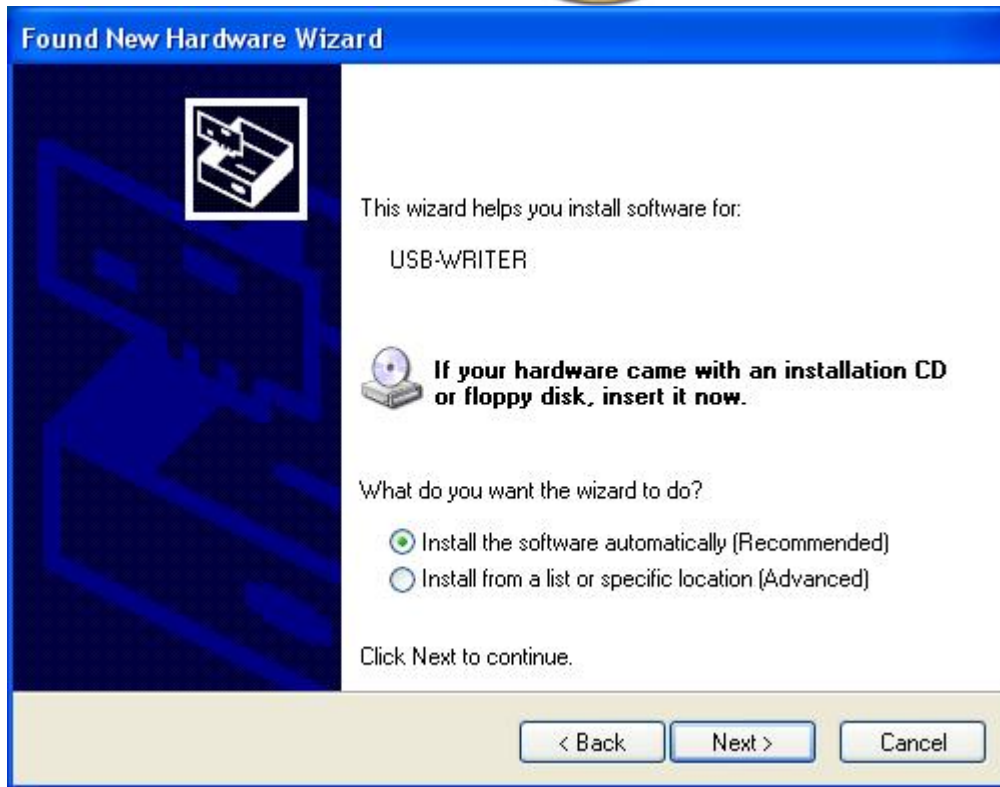
**[If you have installed Windows XP Service Pack 2...]**

When you connect your USB Reader/Writer Box to your PC, the Hardware Wizard will be launched automatically.



\*In some cases, the above window would not appear and you would see the next window as your first step.





Once the Hardware Wizard finishes, palette PTS will be updated to Version 1.07 and ready to use.

**[If you have NOT installed Windows XP Service Pack 2, yet...]**

When you connect your USB Reader/Writer Box to your PC, you will see the following message sequentially and the installation will be completed automatically.



After "Your new hardware is installed and ready to use." is displayed, palette PTS will be updated to Version 1.07 and ready to use.

\*If the message is not displayed and the installation is not completed, please follow the procedures below.



- **(If Your PC is NOT connected to Internet)**

**[If you have installed Windows XP Service Pack 2...]**

When you connect your USB Reader/Writer Box to your PC, the Hardware Wizard will be launched automatically.



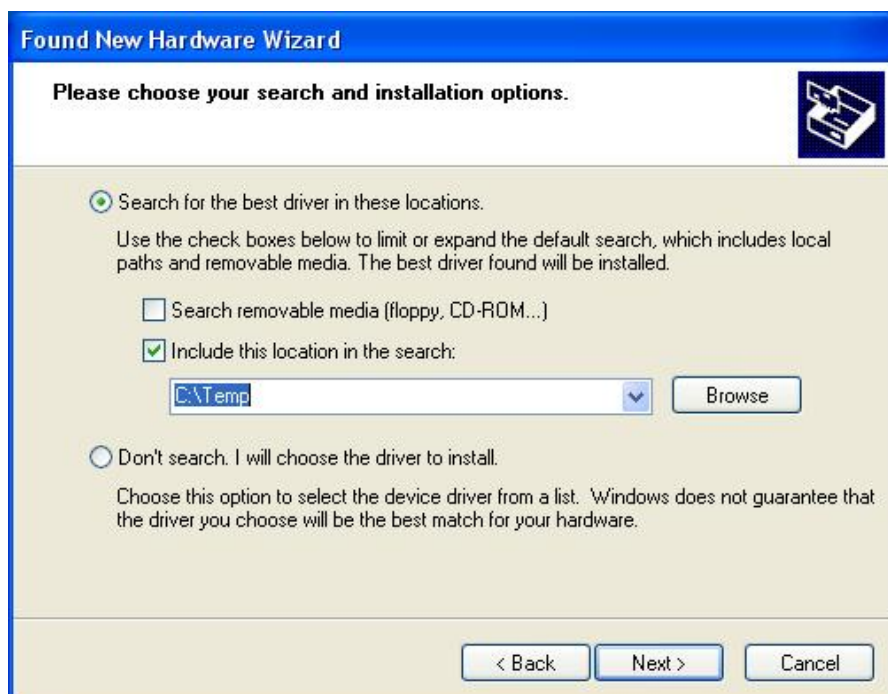
\*In some cases, the above window would not appear and you would see the next window as your first step.







**To install the new device driver for the USB Reader/Writer Box, please specify the previously created temporary folder (ex. C:\Temp) where the downloaded file should be stored.**



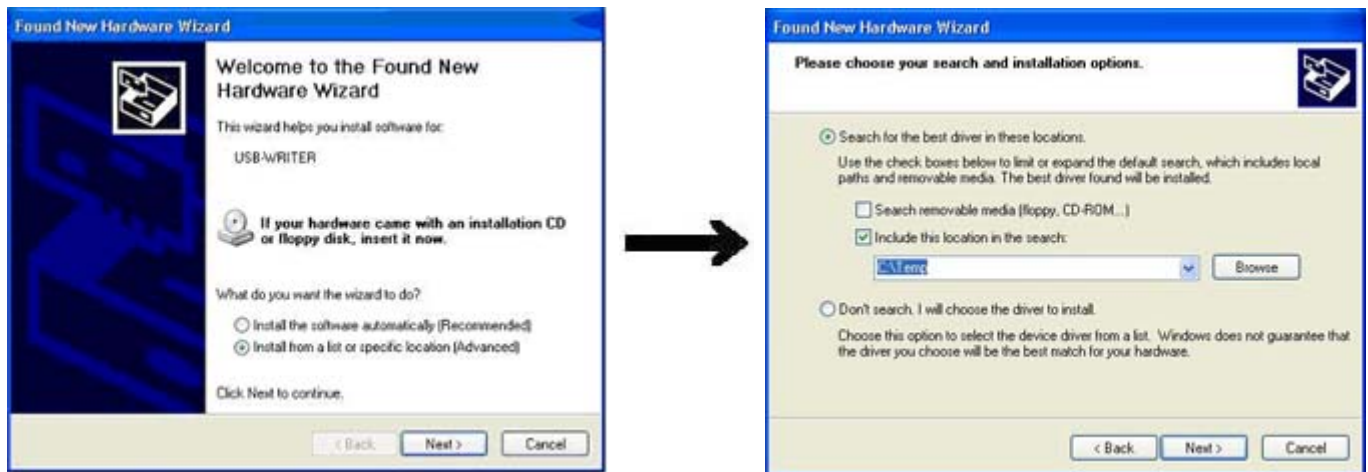


Once the Hardware Wizard finishes, palette PTS will be updated to Version 1.07 and ready to use.

**[If you have NOT installed Windows XP Service Pack 2, yet...]**

When you connect your USB Reader/Writer Box to your PC, the Hardware Wizard will be launched automatically.

**To install the new device driver for the USB Reader/Writer Box, please specify the previously created temporary folder (ex. C:\Temp) where the downloaded file should be stored.**



Once the Hardware Wizard finishes, palette PTS will be updated to Version 1.07 and ready to use.